



Regd. Office :
Aldeko Panels Pvt. Ltd.

A-25, First Floor, Pushpanjali Enclave,
Pitampura, Delhi-110034

Works:

Plot No. : B-10, Sidcul, Kotdwar, Uttarakhand.



info@aldekopanel.com
www.aldekopanel.com



For sales & inquiry

+91 11 4707 4172 | +91 7217714596



ISO: 9001:2015 CERTIFIED CO
ISO: 14001:2015 CERTIFIED CO
ISO: 18001:2015 CERTIFIED CO
ISO: 50001:2011 CERTIFIED CO



Certification & Inspection



For Channel Partner

•Branches & •Warehouses-

•Delhi •Haryana •Punjab •Jammu & Kashmir •Himachal •U.P. •Uttarakhand •Bihar •Jharkhand
•Assam •Orissa •Chhattisgarh •M.P. •Rajasthan •Karnataka •Telangana •Maharashtra •Kerala

ALDEKO
Aluminium Panel Sheets
Bring your vision to life !



VIKANSHU GROUP



ABOUT COMPANY

ALDEKO PANELS is proud to launch its aluminum and metal composite manufacturing facility.

Our premium products will and would inspire new aesthetics and would enable new design possibilities in coming times.

Our commitment to quality, sustainability and customer care is unmatched. **WE KNOW EXCELLENCE.** **ALDEKO** materials stand out and demand to be noticed in any setting.

Exceptional projects demand exceptional materials. **ALDEKO** sheets are manufactured under the most precise and rigorous conditions in **Kotdwar, Uttarakhand**. Our distribution and support capabilities extend throughout Pan India.

Let us help bring your vision to life with our unmatched selection of colors and finishes. Our commitment to your satisfaction means that your success is our success.

Build it better with **ALDEKO**. Let's get started.

BRING YOUR VISION TO LIFE

ALDEKO
Aluminium Panel Sheets



A Little History

ACP was introduced in 1969. From then on, adoption grew exponentially as architects, fabricators and building owners discovered the functional advantages and beautiful possibilities of this remarkable new material. Came 2018, ALDEKO Panels with production and material facility at Kotdwar, Uttarakhand, began production, setting a standard for innovation and quality that would continue to advance today with the introduction of new products and finishes.



FLEXIBLE



DURABLE



LIGHT WEIGHT



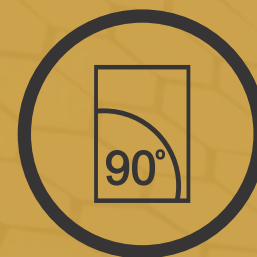
RECYCLABLE



SOUND
INSULATION



WEATHER
RESISTANT



90° BENDABLE

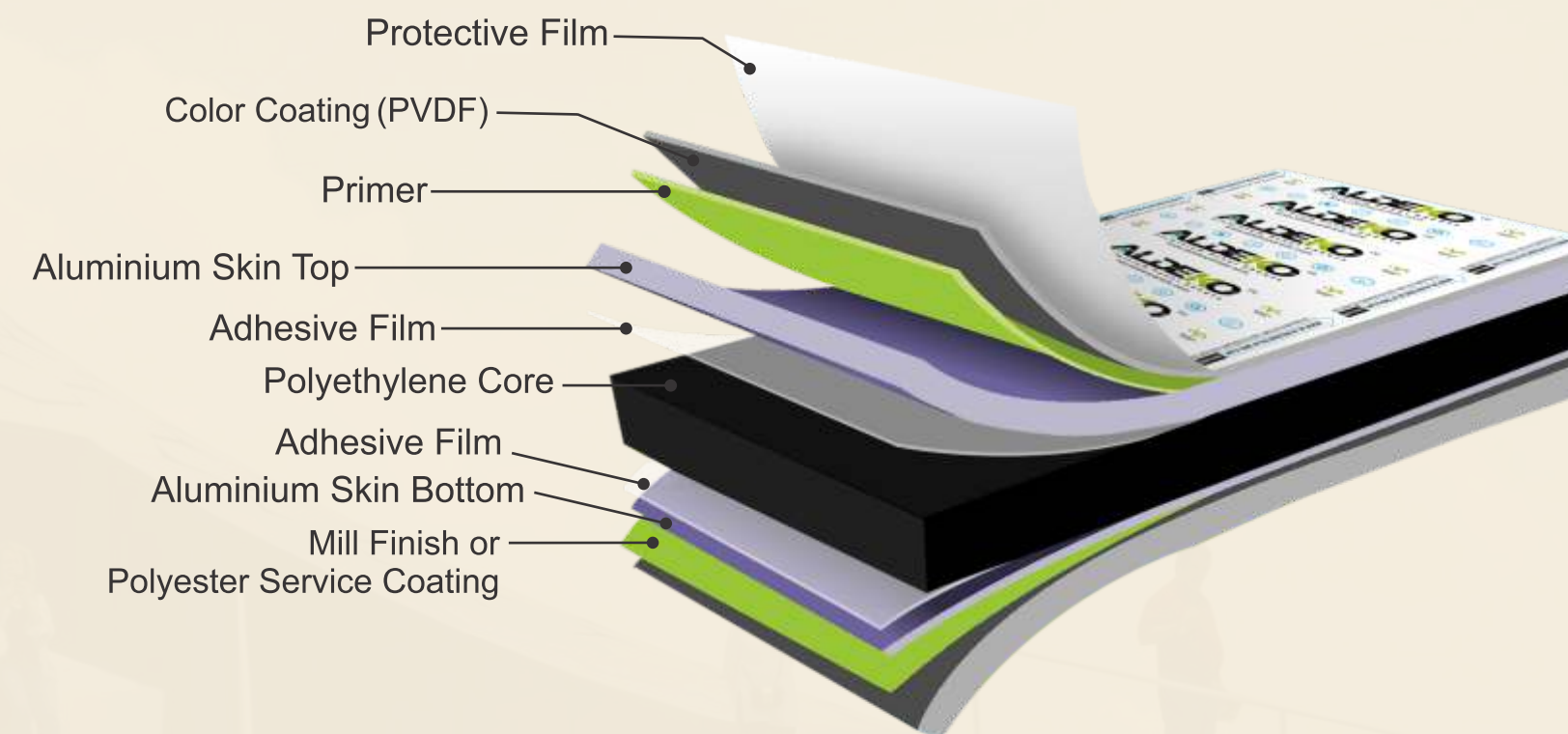
Applications

- Wall Panelling
- Cladding
- Facade
- Signage
- Cabinets
- Doors
- Partitions
- Furniture
- Automotive Parts



In Contract law, a warranty has various meanings but generally means a guarantee or promise. We at Aldeko promise to warrant the product for 12 Years against delamination, fading and chalking, as we believe it helps in building long term relations.

Panel Composition



Aluminium Composite Panels (ACP), made of Aluminium Composite Material (ACM), are flat panels consisting of two thin coil-coated Aluminium Sheet bonded to a non-aluminium core. The pictorial reference on the left explain the core composition.



WABI SABI SERIES

More than a decorative style, Wabi Sabi is a philosophy of life; a way of living and perceiving the world, with the aim of peacefully accepting the natural cycle of growth and decay inherent in life.

At Aldeko Panels, we have created "Wabi Sabi" series that bring into homes simplicity and authenticity. It is about the aesthetic of things in existence that are "imperfect, impermanent and incomplete."

Aluminium Surface
3003 ALLOY



NEW ARRIVAL



ALP 331

Industrial Iron

NEW ARRIVAL



ALP 332

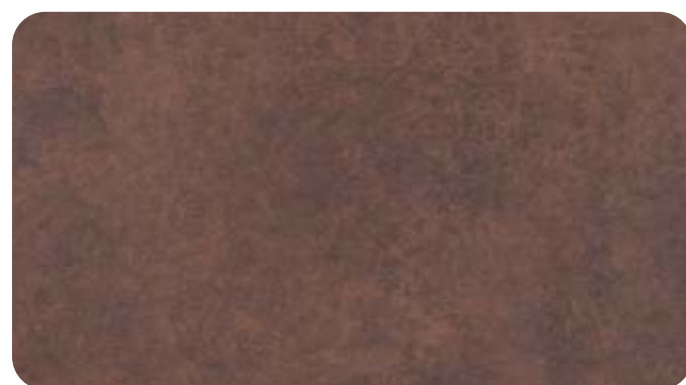
Corton Steel

STONE SERIES

We all keep rolling in life, just as a stone keeps rolling down a hill. All that matters is to be as strong as a stone to stay motivated.

With this motive, Aldeko Panels has designed this stone series. Try this series in the interior of your house or even the exteriors of your corporate buildings. Lets bring a revolution in the industry of architectural decoration.

New Arrival



ALP310



Breccia Brown

ALP311

Syenite Red



ALP 312

Pacific Grey



ALP 313

Pietra Grey



ALP 314

Crema Cenia



ALP 315

Verde Tropical

POISON *Series*



ALP 307

Sunset Red

The Sunset Red is merely a prelude to the dawn, yet its majesty fills ones mind with the most beautiful of dreams, there is a distinct radiant about **"Sunset Red" the Spectra Colour**



ALP 308

Ocean Blue

The Ocean Blue. Calm and gentle. Subtle and sweet. The appearance of someone completely at peace, without a care in the world, there is a distinct tranquility about **"Ocean Blue" the Spectra Colour**



ALP 309

Daylight

The watery daylight pushed back at the darkened edges of dawn, reclaiming the colours of the day that had been washed into grey by the moonlit night. The world came back like a freshly developed photograph; every colour would appear bright and new. That's what we at **ALDEKO Spectra** call **"Daylight"**

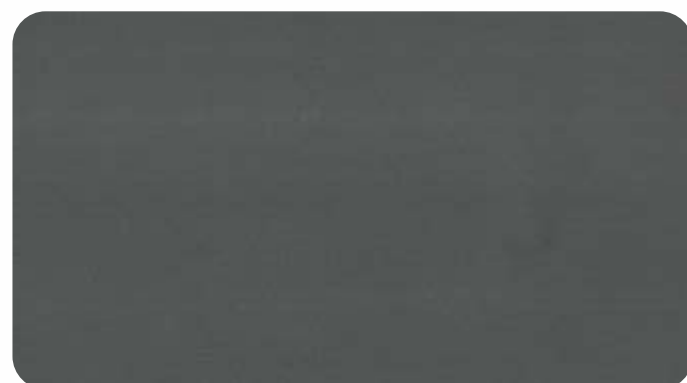
" Spectra your final choice has arrived"

ALDEKO™ Panels, the first Indian
manufacture to bring it to you

ALDEKO™ Spectra Aluminium Composite Panel is inspired by nature changes, either from the peace of creek, the depth of Blue Ocean, the golden of cool autumn, the growth of flowers and plants or from the sunset of a day... All these mysterious natural phenomena become the fountain of **ALDEKO™** Spectra creation.

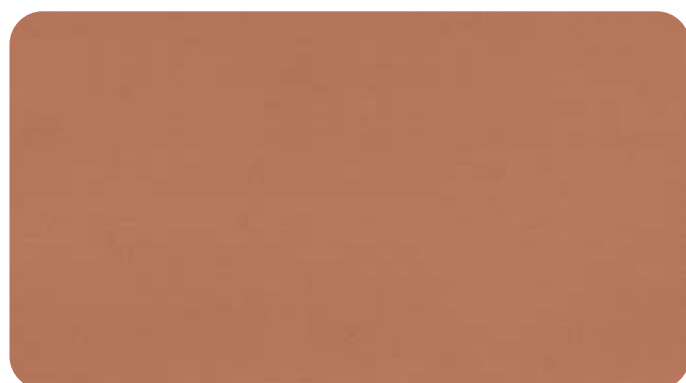
By adopting different special pigments and color ingredients for the color coating process, **ALDEKO™** Spectra best imitates the change of nature. Depending on the view angles and lights that are reflected to the panel surface, the color of **ALDEKO™** Spectra looks different. It brings a new visual appreciation to your buildings.





ALP 321

Shadow Black Sand



ALP 322

Desert Sand



ALP 323

Beige Sand



ALP 324

Ivory Sand

Sky above, sand below, peace within!

How about living life in the lap of nature, feeling its presence all over? You must be thinking, is that even possible? With Aldeko Panels, yes it is possible. The sand series of Aluminum panels allows you to give your house a sandy look that makes you feel like you are in the midst of sand every now and then.

SAND
SERIES





ALC 104 / [ALW 271](#)

American Walnut



ALC 105 / [ALW 253](#)

Royal Teak



ALC 108 / [ALW 272](#)

Chocolate Zebrano



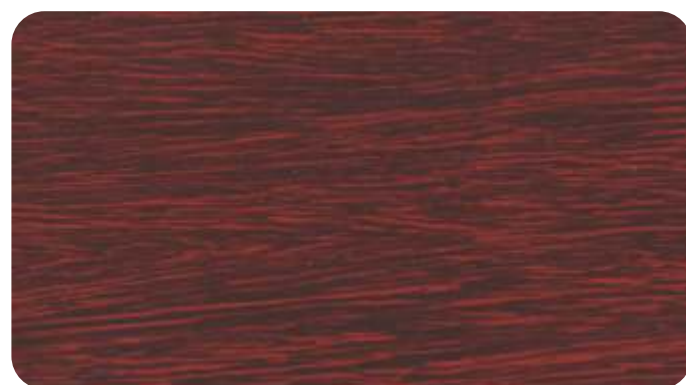
ALC 109 / [ALW 269](#)

Black Oak Texture



ALC 106 / [ALW 266](#)

Oak Wood



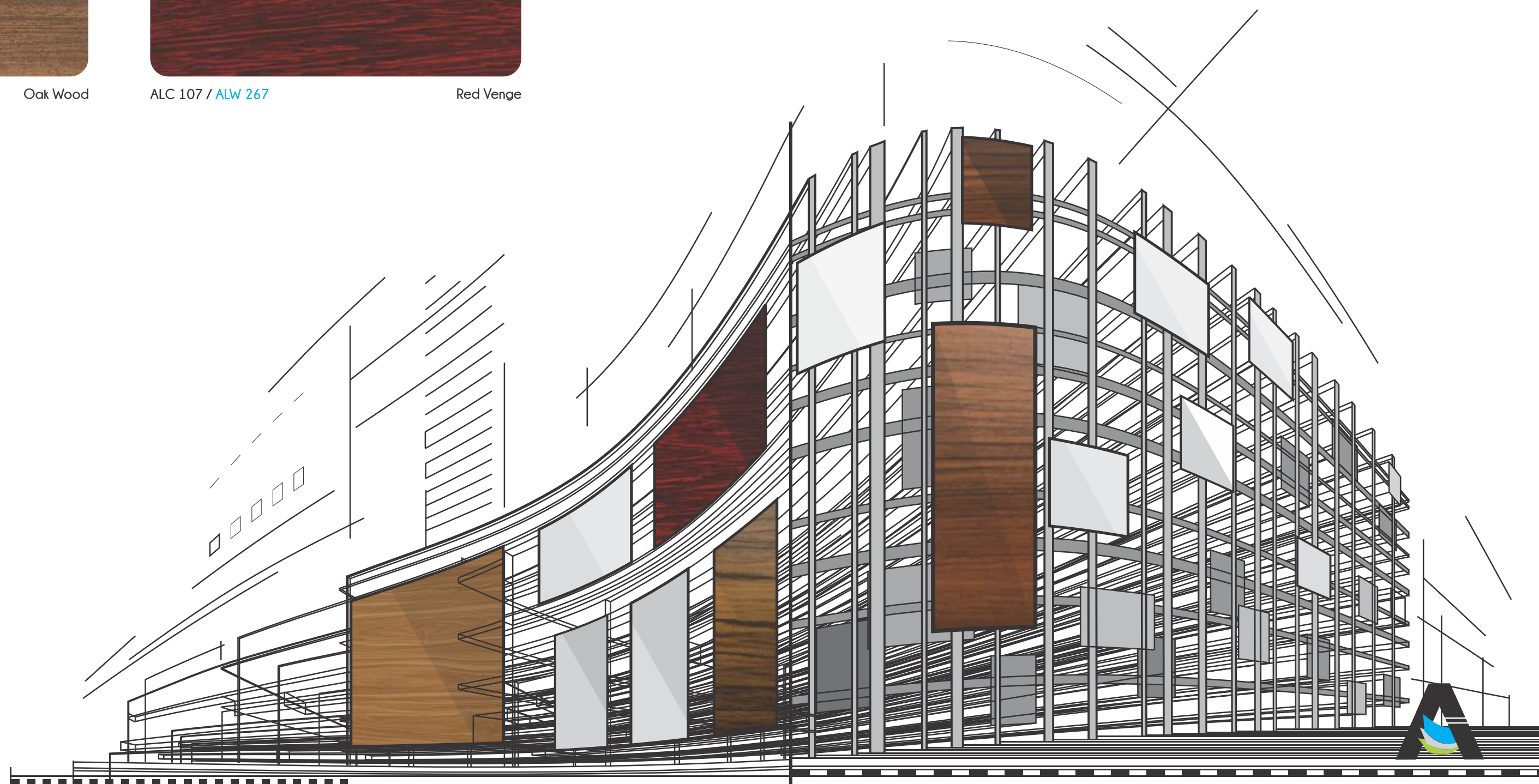
ALC 107 / [ALW 267](#)

Red Venge

WOODEN
SERIES



Scan QR Code
For Bigger Image



WOODEN SERIES



ALC 110 / ALW 270

African Ebony



ALC 111 / ALW 255

Mahagony



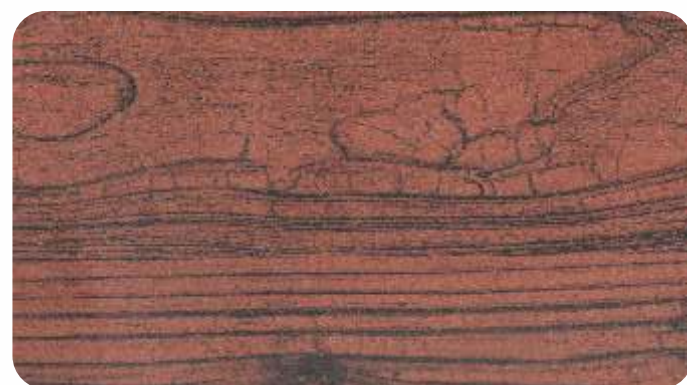
ALW 256

Wenge



ALC 119 / ALW 274

Rovere Oak



ALC 112 / ALW 262

Burma Emony



ALC 114 / ALW 284

Maple



ALC 120 / ALW 254

Brown Santos



ALC 121 / ALW 252

Teak Crust



ALC 116 / ALW 251

Novecento Pine



ALC 118 / ALW 273

Alhamara Wood



ALC 122 / ALW 275

African Teak



ALC 123 / ALW 276

Cordia Wood



Scan QR Code
For Bigger Image



WOODEN SERIES



ALC 124 / [ALW 277](#)

Acacia Wood



ALC 126 / [ALW 278](#)

Brazil Wood



ALC 129 / [ALW 281](#)

Silky Oak



ALC 132 / [ALW 232](#)

Nyana Teak



ALC 127 / [ALW 279](#)

Cumaru Wood



ALC 128 / [ALW280](#)

Tiama Wood



ALC 133 / [ALW 233](#)

Tineo



ALC 134 / [ALW 234](#)

Golden Teak



Scan QR Code
For Bigger Image





Scan QR Code
For Bigger Image



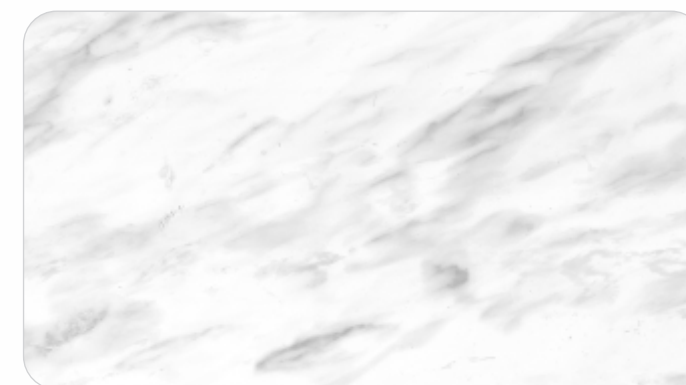
ALC 91 / [ALW 257](#)

Dark Emprador



ALC 113 / [ALW 283](#)

Perlato



ALC 115 / [ALW 285](#)

Satwario



ALC 117 / [ALW 258](#)

Brown Fire



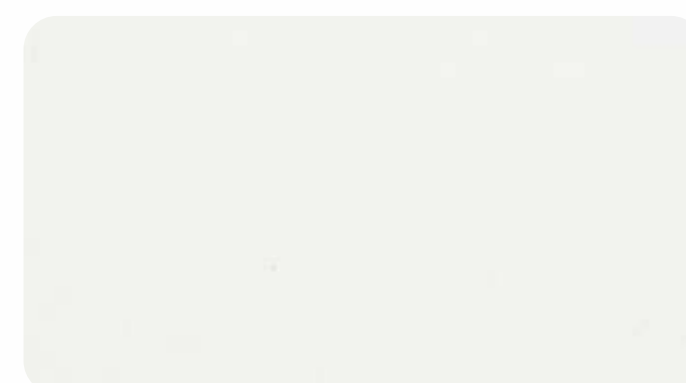
ALC 125 / [ALW 259](#)

Black Galaxy



ALC 131 / [ALW 231](#)

Travertino



ALC 101 / [ALW 291](#)

Sparkle White



ALC 102 / [ALW 292](#)

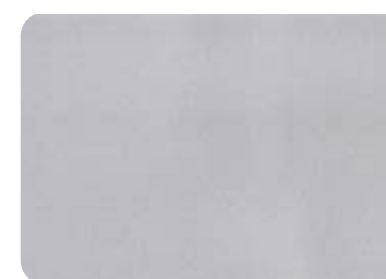
Sparkle Black



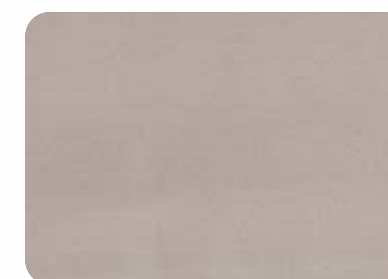
METALLIC SERIES



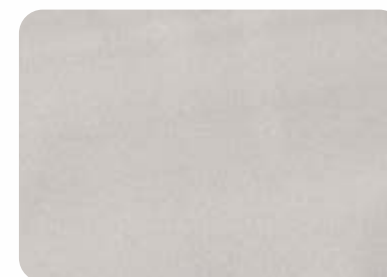
ALD 01 / ALT 201 ● Bright Silver



ALD 02 / ALT 202 ● Metallic Silver



ALD 03 / ALT 203 Champaign Gold



ALD 04 / ALT 204 Champaign Silver



ALD 05 / ALT 205 ● Black Silver



ALD 06 / ALT 207 Fine Copper



ALD 07 / ALT 208 Blue Silver



ALD 08 / ALT 236 Super Gold



ALD 09 / ALT 211 Magic Gold



ALD 10 Wine Metallic



ALD 17 Lilac Silver



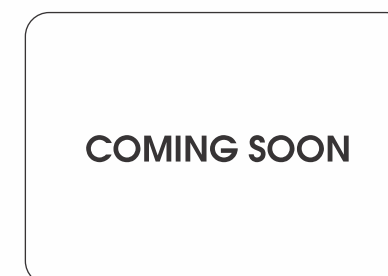
ALT 206 Jade Silver



ALT 234 Pearl Copper



COMING SOON

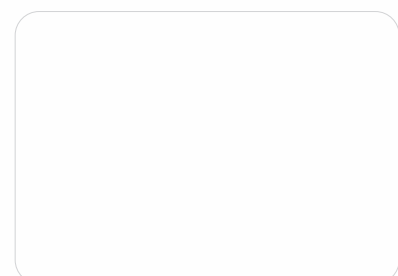


COMING SOON

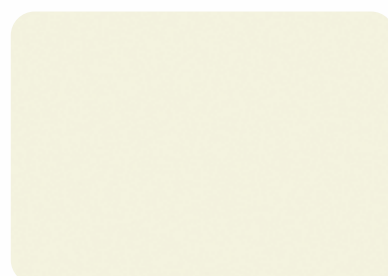
● COLOR ALSO AVAILABLE IN PLUS (0.50) SERIES



SOLID *Series*



ALD 21 / ALT 221 ● Pure White



ALD 22 / ALT 222 Off White



ALD 23 / ALT 223 ● Postal Red



ALD 24 / ALT 235 Choco Brown



ALD 25 / ALT 229 Navy Blue



ALD 26 / ALT 225 Sea Blue



ALD 27 / ALT 239 Orange



ALD 28 / ALT 227 Emerald Green



ALD 29 / ALT 228 Lemon Yellow



ALD 30 / ALT 212 Traffic Yellow



ALD 31 / ALT 230 Coal Black



ALD 32 Lilac



ALD 33 Samsung Blue



ALT 224 HPCL Blue



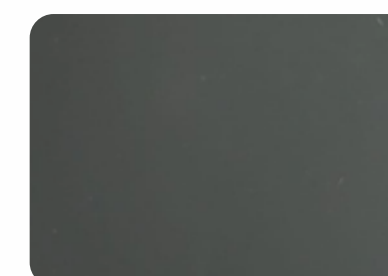
ALD 39 Byjus Purple



ALT 237 Burgandy



ALT 241 Refreshing Green



ALD 41 / ALT 238 Deep Grey



ALD 42 Brick Red



ALD 43 Dholpur Red



ALD 44 / ALT 244 Parrot Green

GLOSSY *Series*



ALD 15 / ALT 231 Glossy White



ALD 16 / ALT 216 Glossy Red



ALD 38 / ALT 248 Glossy Pink



ALD 36 / ALT 232 Glossy Black



ALD 40 / ALT 240 Glossy Orange

BRUSH *Series*



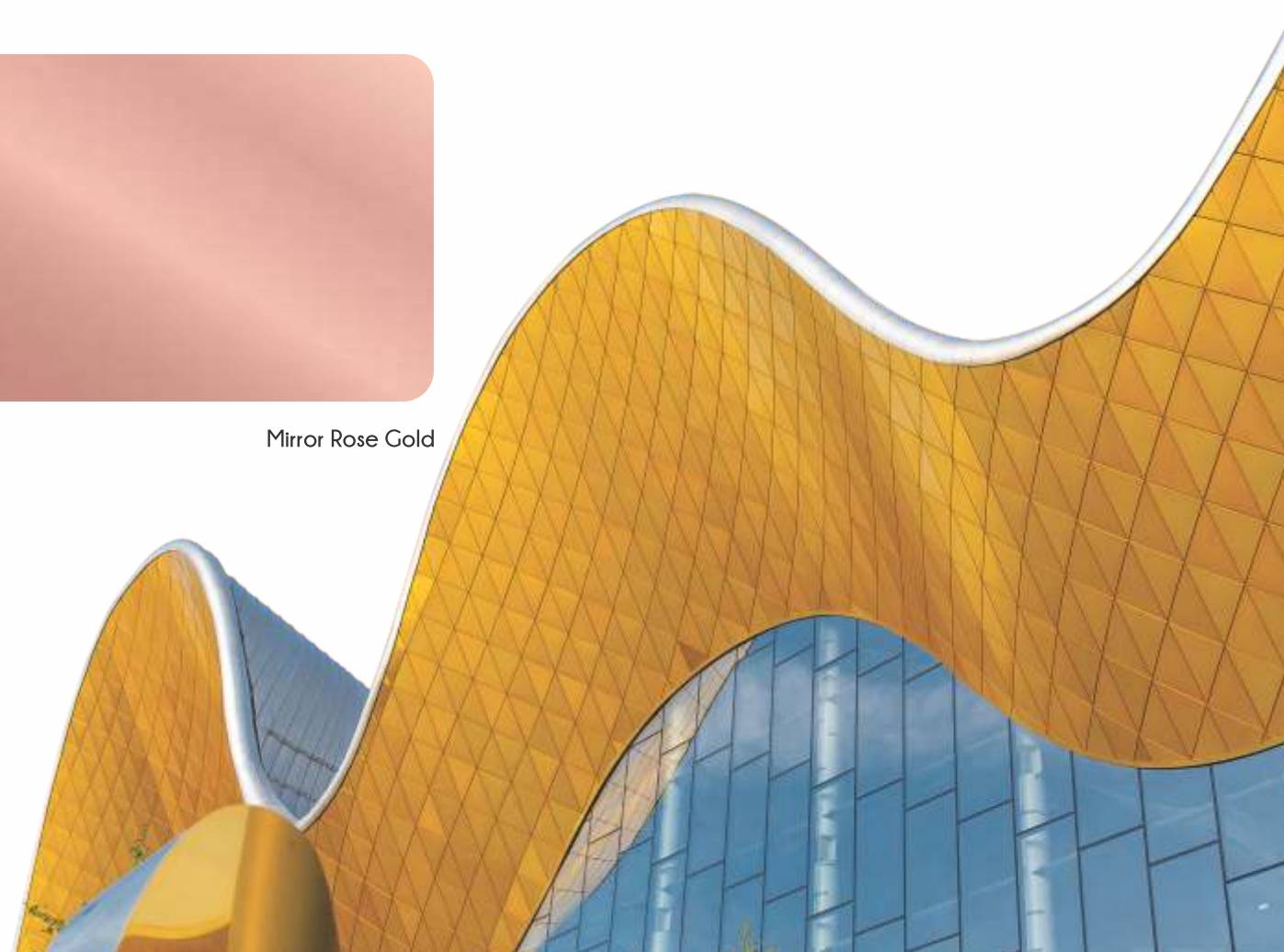
ALD 11 / ALT 210 Brush Silver



ALD 12 / ALT 242 Brush Gold



ALD 14 / ALT 243 Brush Copper



CERTIFICATE



FR GRADE ALUMINIUM PANEL

ALDEKO™ fr is a metal composite panel consisting of two layers of Aluminium skin, sandwiching a fire rated environment green core in a continuous co-extrusion process. ALDEKO™ fr is committed to a sustainable future and is now available in three fire rated cores A2, B1 & B2. ALDEKO™ RETRO a signage master application product available on request.



ENVIROMENT FRIENDLY



UNBREAKABLE



FIRE PROTECTION



REGULAR ACP

RAPID FIRE SPREAD

Fire Spreads upwards due to a COMBUSTIBLE CLADDING



FR ACP

RESTRICTED FIRE SPREAD

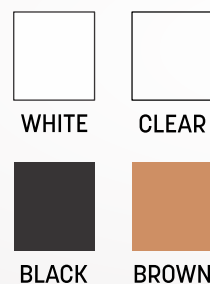
Fire Spread is restricted due to a FIRE RETARDANT CLADDING material and system



ALDEKO

NEWLY LAUNCHED PRODUCTS

SILICONE



WPC EXTERIOR LOUVERS



SPECIFICATIONS

Colors Available : 5
Length : 2900mm
Width : 219mm
Thickness : 26mm

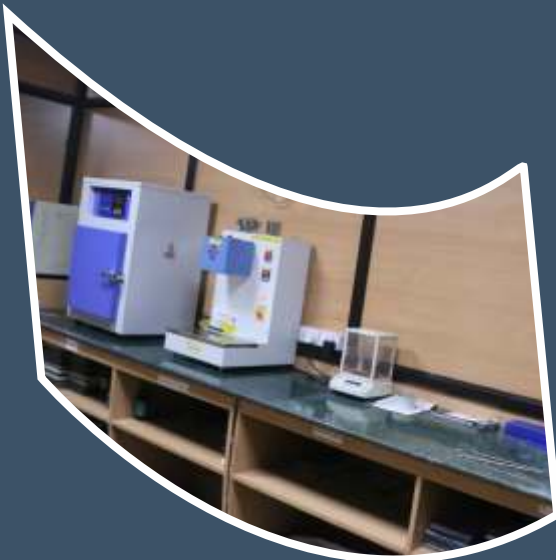


SOME REALIZATIONS WITH **ALDEKO**

What is ACP ?

Be Artistic or adventures and explore the contemporary buildings in practically any city in India, and you're bound to see many examples of a transformational architectural material, although you might not realize it. Aluminum Composite Panels (ACP) have reshaped the skyline, enabling architects to realise their visions which happened to be impractical or quite impossible less than 50 years ago.



Panel Options

Width	1220mm
Length	upon request (Maximum 9150mm)
Panel-thickness	3mm to 4mm
Application	For Exterior
Coat	PVDF

Panel Dimensions

Standard sizes	1220 x 3660
	1220 x 3050
	1220 x 2440
	1550 x requested

Disclaimers : Shades may vary from batch to batch
(Please match the batch number before installation. Company liability does not arise if the shade mis match due to batch variation.)

